



**TOWNSHIP OF CHISHOLM
PUBLIC NOTICE OF APPLICATION
FOR CONSENT**

Re: MARTIN AND ANNA HOCHSTETLER (OWNERS)

FILE NO. 2024-11 & 12

Location: 1483 ALDERDALE ROAD

IN THE MATTER of an application for consent under Section 53 of the **PLANNING ACT** by: **MARTIN AND ANNA HOCHSTETLER** for LOTS 9 to 11 and LOTS 15 to 20 of PLAN M185, in addition to those parts of an unnamed street surrounding the said lots. The **TOWNSHIP OF CHISHOLM COMMITTEE OF ADJUSTMENT** has appointed: **TUESDAY, DECEMBER 3RD, 2024** for a public hearing to consider this application for consent.

The **PUBLIC HEARING** will be held in the Township of Chisholm Council Chambers, 2847 Chiswick Line **commencing at 7:00 p.m.** If you can not attend in person, you can attend by zoom. Visit www.zoom.us Click Join and enter the Meeting ID: 836 5238 6073 and Passcode: 123456

PURPOSE AND EFFECT OF THE APPLICATION:

The applicant is applying to create 2 lots and retain one lot, as shown on attached sketch, by consolidating certain original subdivision lots and dividing certain original subdivision lots from Plan M-185, in addition to purchasing and consolidating the unopened road allowance surrounding the said lots on Plan M-185. The severed lots will each have a frontage of 6.096 meters on Alderdale Road, and will encompass approximately 0.5224 hectares (severed lot #1) and 0.3042 hectares (severed lot # 2). The retained lot will have a frontage of 48.159 meters on Alderdale Road and encompass approximately 0.5088 hectares. The subject lands are described as PLAN M185 LOTS 9 TO 11 LOT 15 TO 21 PCL 11986 12710 13251 13382 27313 PCL 16824 NIP.

The purpose of this notice is to inform you of the nature of the application, invite input, advise you how to make comments on the application, and to advise of future notifications and appeal rights.

DEADLINE FOR WRITTEN SUBMISSIONS: DECEMBER 3RD, 2024 at 3:00 PM

ADDITIONAL INFORMATION relating to this application for consent is available for inspection between 9:00 a.m. and 4:30 p.m. at the municipal office in Chisholm Township. Please quote file number: 2024-11 and 12. Any person or public body may appeal a decision of the Township of Chisholm Committee of Adjustment not later than twenty (20) days after notice of the decision is given. **IF A PERSON OR PUBLIC BODY** that files an appeal of a decision of the **TOWNSHIP OF CHISHOLM COMMITTEE OF ADJUSTMENT** in respect of the proposed consent does not make a written submission to the **TOWNSHIP OF CHISHOLM COMMITTEE OF ADJUSTMENT** before it gives or refuses to give a provisional consent, the **ONTARIO LAND TRIBUNAL** may dismiss the appeal. If you wish to be notified of the decision of the **TOWNSHIP OF CHISHOLM COMMITTEE OF ADJUSTMENT** in respect of the proposed consent, you must make a written request to the Township of Chisholm Committee of Adjustment, 2847 Chiswick Line, Powassan, ON, P0H 1Z0. This will also entitle you to be advised of a possible Ontario Land Tribunal Hearing. Even if you are the successful party, you should request a copy of the decision since the Committee's decision may be appealed to the Ontario Land Tribunal by the applicant or another member of the public.

If you wish to appeal the decision to the Ontario Land Tribunal, send a letter to the Secretary of the Township of Chisholm Committee of Adjustment outlining the reason for the appeal. You must also enclose the appeal fee of \$400, paid by money order or cheque, made payable to the Ontario Minister of Finance. The appeal form and money order or cheque should be forwarded to the municipal office, who will in turn forward it to the Ontario Land Tribunal.

The land which is the subject of this application for consent is not the subject of an application under the **PLANNING ACT** for an Official Plan Amendment, a Zoning By-law Amendment, an amendment to a Minister's Zoning Order or a minor variance.

Dated this 15th day of November, 2024.

Telephone (705) 724-3526
Fax (705) 724-5099
Email info@chisholm.ca

Jenny Leblond, CAO Clerk-Treasurer
Committee of Adjustment
Township of Chisholm
2847 Chiswick Line, Powassan, ON P0H 1Z0



**TOWNSHIP OF CHISHOLM
PUBLIC NOTICE OF APPLICATION
FOR CONSENT**

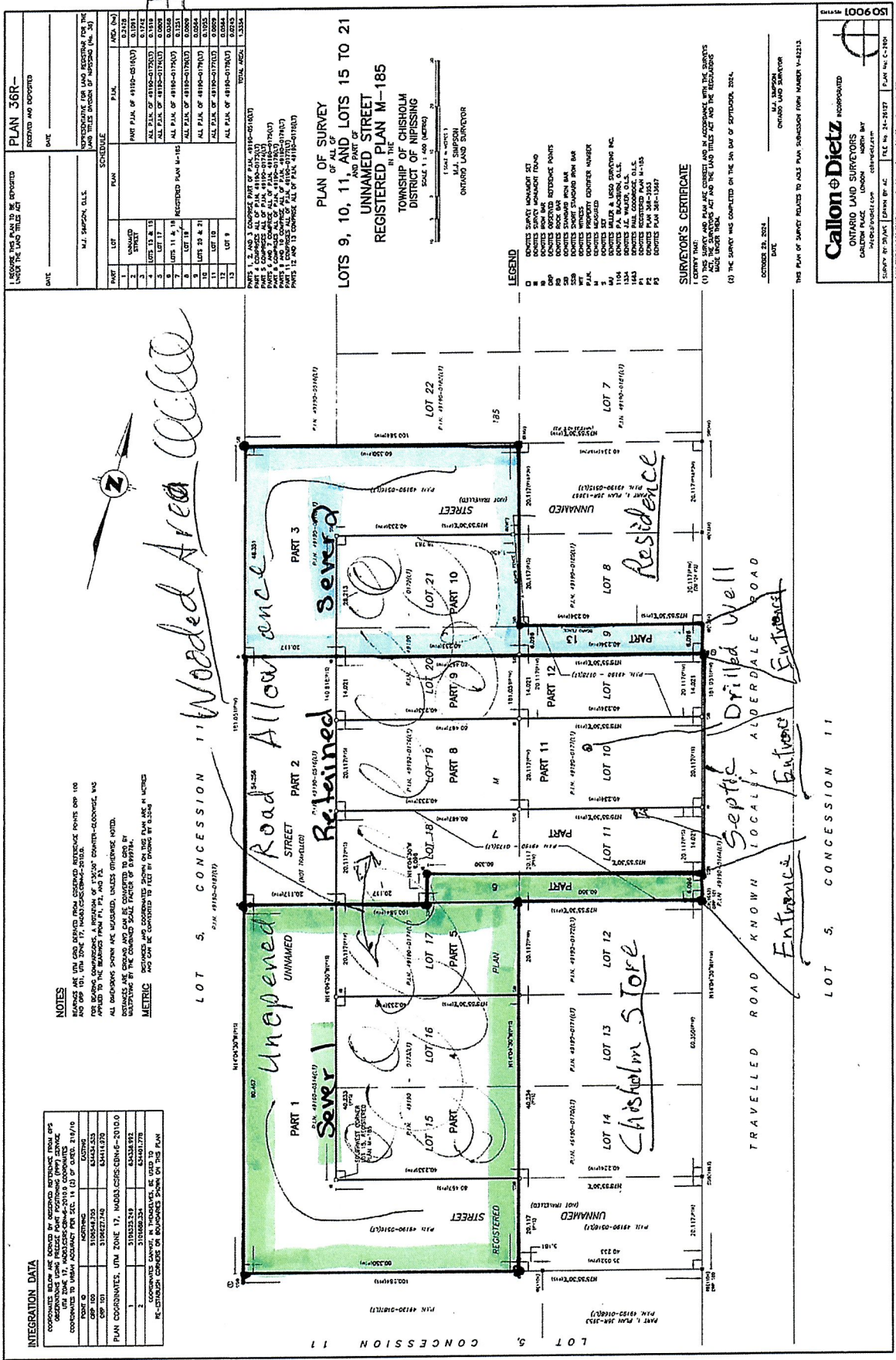
Re: **MARTIN AND ANNA HOCHSTETLER (OWNERS)**

FILE NO. 2024-11 & 12

Location: **1483 ALDERDALE ROAD**

Subject Property

Sketch



PLAN 368-
RECORDED AND DEPOSITED

DATE: _____

APPROVED FOR THE TOWNSHIP BY: _____

APPROVED FOR THE SURVEYOR BY: _____

PARCELS	LOT	PLAN	P.L.N.	AREA (M ²)
1	UNNAMED STREET		P.L.N. 49190-0510(1)	0.2129
2	LOT 13 & 10		P.L.N. 49190-0710(1)	0.1918
3	LOT 17		P.L.N. 49190-0710(2)	0.0009
4	LOT 11 & 12		P.L.N. 49190-0710(3)	0.1231
5	LOT 18		P.L.N. 49190-0710(4)	0.0009
6	LOT 20 & 21		P.L.N. 49190-0710(5)	0.0009
7	LOT 9		P.L.N. 49190-0710(6)	0.0009
8	LOT 14		P.L.N. 49190-0710(7)	0.0009
9	LOT 15		P.L.N. 49190-0710(8)	0.0009
10	LOT 16		P.L.N. 49190-0710(9)	0.0009
11	LOT 17		P.L.N. 49190-0710(10)	0.0009
12	LOT 18		P.L.N. 49190-0710(11)	0.0009
13	LOT 19		P.L.N. 49190-0710(12)	0.0009
14	LOT 20		P.L.N. 49190-0710(13)	0.0009
15	LOT 21		P.L.N. 49190-0710(14)	0.0009
16	LOT 22		P.L.N. 49190-0710(15)	0.0009
17	LOT 23		P.L.N. 49190-0710(16)	0.0009
18	LOT 24		P.L.N. 49190-0710(17)	0.0009
19	LOT 25		P.L.N. 49190-0710(18)	0.0009
20	LOT 26		P.L.N. 49190-0710(19)	0.0009
21	LOT 27		P.L.N. 49190-0710(20)	0.0009
22	LOT 28		P.L.N. 49190-0710(21)	0.0009
23	LOT 29		P.L.N. 49190-0710(22)	0.0009
24	LOT 30		P.L.N. 49190-0710(23)	0.0009
25	LOT 31		P.L.N. 49190-0710(24)	0.0009
26	LOT 32		P.L.N. 49190-0710(25)	0.0009
27	LOT 33		P.L.N. 49190-0710(26)	0.0009
28	LOT 34		P.L.N. 49190-0710(27)	0.0009
29	LOT 35		P.L.N. 49190-0710(28)	0.0009
30	LOT 36		P.L.N. 49190-0710(29)	0.0009
31	LOT 37		P.L.N. 49190-0710(30)	0.0009
32	LOT 38		P.L.N. 49190-0710(31)	0.0009
33	LOT 39		P.L.N. 49190-0710(32)	0.0009
34	LOT 40		P.L.N. 49190-0710(33)	0.0009
35	LOT 41		P.L.N. 49190-0710(34)	0.0009
36	LOT 42		P.L.N. 49190-0710(35)	0.0009
37	LOT 43		P.L.N. 49190-0710(36)	0.0009
38	LOT 44		P.L.N. 49190-0710(37)	0.0009
39	LOT 45		P.L.N. 49190-0710(38)	0.0009
40	LOT 46		P.L.N. 49190-0710(39)	0.0009
41	LOT 47		P.L.N. 49190-0710(40)	0.0009
42	LOT 48		P.L.N. 49190-0710(41)	0.0009
43	LOT 49		P.L.N. 49190-0710(42)	0.0009
44	LOT 50		P.L.N. 49190-0710(43)	0.0009
45	LOT 51		P.L.N. 49190-0710(44)	0.0009
46	LOT 52		P.L.N. 49190-0710(45)	0.0009
47	LOT 53		P.L.N. 49190-0710(46)	0.0009
48	LOT 54		P.L.N. 49190-0710(47)	0.0009
49	LOT 55		P.L.N. 49190-0710(48)	0.0009
50	LOT 56		P.L.N. 49190-0710(49)	0.0009
51	LOT 57		P.L.N. 49190-0710(50)	0.0009
52	LOT 58		P.L.N. 49190-0710(51)	0.0009
53	LOT 59		P.L.N. 49190-0710(52)	0.0009
54	LOT 60		P.L.N. 49190-0710(53)	0.0009
55	LOT 61		P.L.N. 49190-0710(54)	0.0009
56	LOT 62		P.L.N. 49190-0710(55)	0.0009
57	LOT 63		P.L.N. 49190-0710(56)	0.0009
58	LOT 64		P.L.N. 49190-0710(57)	0.0009
59	LOT 65		P.L.N. 49190-0710(58)	0.0009
60	LOT 66		P.L.N. 49190-0710(59)	0.0009
61	LOT 67		P.L.N. 49190-0710(60)	0.0009
62	LOT 68		P.L.N. 49190-0710(61)	0.0009
63	LOT 69		P.L.N. 49190-0710(62)	0.0009
64	LOT 70		P.L.N. 49190-0710(63)	0.0009
65	LOT 71		P.L.N. 49190-0710(64)	0.0009
66	LOT 72		P.L.N. 49190-0710(65)	0.0009
67	LOT 73		P.L.N. 49190-0710(66)	0.0009
68	LOT 74		P.L.N. 49190-0710(67)	0.0009
69	LOT 75		P.L.N. 49190-0710(68)	0.0009
70	LOT 76		P.L.N. 49190-0710(69)	0.0009
71	LOT 77		P.L.N. 49190-0710(70)	0.0009
72	LOT 78		P.L.N. 49190-0710(71)	0.0009
73	LOT 79		P.L.N. 49190-0710(72)	0.0009
74	LOT 80		P.L.N. 49190-0710(73)	0.0009
75	LOT 81		P.L.N. 49190-0710(74)	0.0009
76	LOT 82		P.L.N. 49190-0710(75)	0.0009
77	LOT 83		P.L.N. 49190-0710(76)	0.0009
78	LOT 84		P.L.N. 49190-0710(77)	0.0009
79	LOT 85		P.L.N. 49190-0710(78)	0.0009
80	LOT 86		P.L.N. 49190-0710(79)	0.0009
81	LOT 87		P.L.N. 49190-0710(80)	0.0009
82	LOT 88		P.L.N. 49190-0710(81)	0.0009
83	LOT 89		P.L.N. 49190-0710(82)	0.0009
84	LOT 90		P.L.N. 49190-0710(83)	0.0009
85	LOT 91		P.L.N. 49190-0710(84)	0.0009
86	LOT 92		P.L.N. 49190-0710(85)	0.0009
87	LOT 93		P.L.N. 49190-0710(86)	0.0009
88	LOT 94		P.L.N. 49190-0710(87)	0.0009
89	LOT 95		P.L.N. 49190-0710(88)	0.0009
90	LOT 96		P.L.N. 49190-0710(89)	0.0009
91	LOT 97		P.L.N. 49190-0710(90)	0.0009
92	LOT 98		P.L.N. 49190-0710(91)	0.0009
93	LOT 99		P.L.N. 49190-0710(92)	0.0009
94	LOT 100		P.L.N. 49190-0710(93)	0.0009
95	LOT 101		P.L.N. 49190-0710(94)	0.0009
96	LOT 102		P.L.N. 49190-0710(95)	0.0009
97	LOT 103		P.L.N. 49190-0710(96)	0.0009
98	LOT 104		P.L.N. 49190-0710(97)	0.0009
99	LOT 105		P.L.N. 49190-0710(98)	0.0009
100	LOT 106		P.L.N. 49190-0710(99)	0.0009
101	LOT 107		P.L.N. 49190-0710(100)	0.0009
102	LOT 108		P.L.N. 49190-0710(101)	0.0009
103	LOT 109		P.L.N. 49190-0710(102)	0.0009
104	LOT 110		P.L.N. 49190-0710(103)	0.0009
105	LOT 111		P.L.N. 49190-0710(104)	0.0009
106	LOT 112		P.L.N. 49190-0710(105)	0.0009
107	LOT 113		P.L.N. 49190-0710(106)	0.0009
108	LOT 114		P.L.N. 49190-0710(107)	0.0009
109	LOT 115		P.L.N. 49190-0710(108)	0.0009
110	LOT 116		P.L.N. 49190-0710(109)	0.0009
111	LOT 117		P.L.N. 49190-0710(110)	0.0009
112	LOT 118		P.L.N. 49190-0710(111)	0.0009
113	LOT 119		P.L.N. 49190-0710(112)	0.0009
114	LOT 120		P.L.N. 49190-0710(113)	0.0009
115	LOT 121		P.L.N. 49190-0710(114)	0.0009
116	LOT 122		P.L.N. 49190-0710(115)	0.0009
117	LOT 123		P.L.N. 49190-0710(116)	0.0009
118	LOT 124		P.L.N. 49190-0710(117)	0.0009
119	LOT 125		P.L.N. 49190-0710(118)	0.0009
120	LOT 126		P.L.N. 49190-0710(119)	0.0009
121	LOT 127		P.L.N. 49190-0710(120)	0.0009
122	LOT 128		P.L.N. 49190-0710(121)	0.0009
123	LOT 129		P.L.N. 49190-0710(122)	0.0009
124	LOT 130		P.L.N. 49190-0710(123)	0.0009
125	LOT 131		P.L.N. 49190-0710(124)	0.0009
126	LOT 132		P.L.N. 49190-0710(125)	0.0009
127	LOT 133		P.L.N. 49190-0710(126)	0.0009
128	LOT 134		P.L.N. 49190-0710(127)	0.0009
129	LOT 135		P.L.N. 49190-0710(128)	0.0009
130	LOT 136		P.L.N. 49190-0710(129)	0.0009
131	LOT 137		P.L.N. 49190-0710(130)	0.0009
132	LOT 138		P.L.N. 49190-0710(131)	0.0009
133	LOT 139		P.L.N. 49190-0710(132)	0.0009
134	LOT 140		P.L.N. 49190-0710(133)	0.0009
135	LOT 141		P.L.N. 49190-0710(134)	0.0009
136	LOT 142		P.L.N. 49190-0710(135)	0.0009
137	LOT 143		P.L.N. 49190-0710(136)	0.0009
138	LOT 144		P.L.N. 49190-0710(137)	0.0009
139	LOT 145		P.L.N. 49190-0710(138)	0.0009
140	LOT 146		P.L.N. 49190-0710(139)	0.0009
141	LOT 147		P.L.N. 49190-0710(140)	0.0009
142	LOT 148		P.L.N. 49190-0710(141)	0.0009
143	LOT 149		P.L.N. 49190-0710(142)	0.0009
144	LOT 150		P.L.N. 49190-0710(143)	0.0009
145	LOT 151		P.L.N. 49190-0710(144)	0.0009
146	LOT 152		P.L.N. 49190-0710(145)	0.0009
147	LOT 153		P.L.N. 49190-0710(146)	0.0009
148	LOT 154		P.L.N. 49190-0710(147)	0.0009
149	LOT 155		P.L.N. 49190-0710(148)	0.0009
150	LOT 156		P.L.N. 49190-0710(149)	0.0009
151	LOT 157		P.L.N. 49190-0710(150)	0.0009
152	LOT 158		P.L.N. 49190-0710(151)	0.0009
153	LOT 159		P.L.N. 49190-0710(152)	0.0009
154	LOT 160		P.L.N. 49190-0710(153)	0.0009
155	LOT 161		P.L.N. 49190-0710(154)	0.0009
156	LOT 162		P.L.N. 49190-0710(155)	0.0009
157	LOT 163		P.L.N. 49190-0710(156)	0.0009
158	LOT 164		P.L.N. 49190-0710(157)	0.0009
159	LOT 165		P.L.N. 49190-0710(158)	0.0009
160	LOT 166		P.L.N. 49190-0710(159)	0.0009
161	LOT 167		P.L.N. 49190-0710(160)	0.0009
162	LOT 168		P.L.N. 49190-0710(161)	0.0009
163	LOT 169		P.L.N. 49190-0710(162)	0.0009
164	LOT 170		P.L.N. 49190-0710(163)	0.0009
165	LOT 171		P.L.N. 49190-0710(164)	0.0009
166	LOT 172		P.L.N. 49190-0710(165)	0.0009
167	LOT 173		P.L.N. 49190-0710(166)	0.0009
168	LOT 174		P.L.N. 49190-0710(167)	0.0009
169	LOT 175		P.L.N. 49190-0710(168)	0.0009
170	LOT 176		P.L.N. 49190-0710(169)	0.0009
171	LOT 177		P.L.N. 49190-0710(170)	0.0009
172	LOT 178		P.L.N. 49190-0710(171)	0.0009
173	LOT 179		P.L.N. 49190-0710(172)	0.0009
174	LOT 180		P.L.N. 49190-0710(173)	0.0009
175	LOT 181		P.L.N. 49190-0710(174)	0.0009
176	LOT 182		P.L.N. 49190-0710(175)	0.0009
177	LOT 183		P.L.N. 49190-0710(176)	